

# **SK-1.0** Context Plan



Date: January 14, 2021  
Project No: 1809  
Scale: 1: 500

Concept sketch for:  
**Neshama Hospice**  
25 Brightwood Street, North York, ON M3H 2Z7  
Neshama Hospice



**Hilditch Architect Inc.**

401 Richmond Street West, Suite 139  
Toronto, Ontario M5V 3A8  
t: (416) 977-7877 f: (416) 977-8460  
[www.hilditch-architect.com](http://www.hilditch-architect.com)



**SK-1.1**  
Proposed Site Plan



Date: January 14, 2021  
Project No: 1809  
Scale: 1: 300

Concept sketch for:  
**Neshama Hospice**  
25 Brightwood Street, North York, ON M3H 2Z7  
Neshama Hospice



**Hilditch Architect Inc.**

401 Richmond Street West, Suite 139  
Toronto, Ontario M5V 3A8  
t: (416) 977-7877 f: (416) 977-8460  
www.hilditch-architect.com





**SK-3.0**  
Main Entrance Persepective

Date: January 14, 2021  
Project No: 1809  
Scale: 1:200

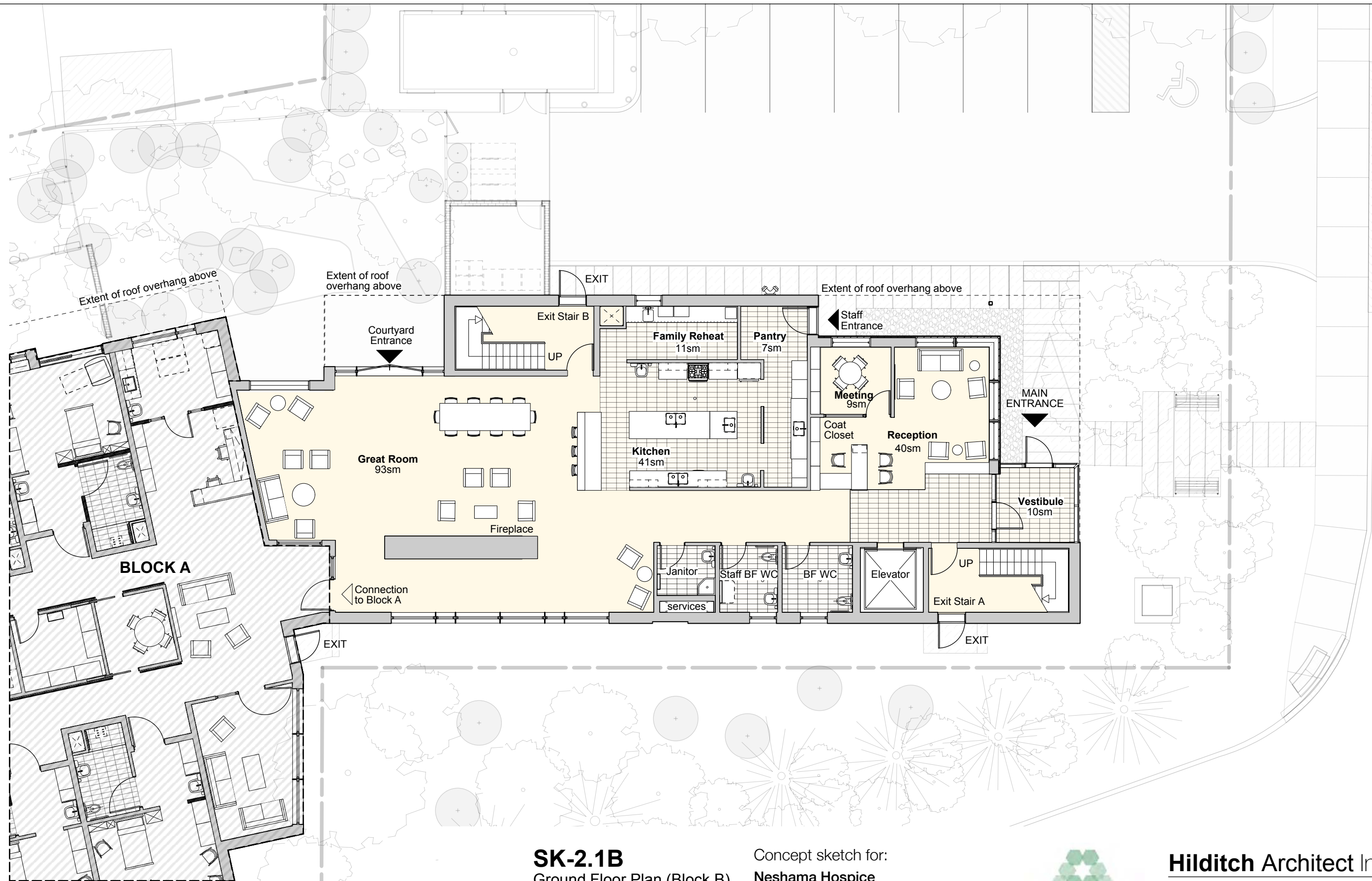
Concept sketch for:  
**Neshama Hospice**  
25 Brightwood Street, North York, ON M3H 2Z7  
Neshama Hospice



**Hilditch Architect Inc.** 

401 Richmond Street West, Suite 139  
Toronto, Ontario M5V 3A8  
t: (416) 977-7877 f: (416) 977-8460  
[www.hilditch-architect.com](http://www.hilditch-architect.com)





## SK-2.1B

### Ground Floor Plan (Block B)



Date: January 14, 2021  
 Project No: 1809  
 Scale: 1:150

Concept sketch for:  
**Neshama Hospice**  
 25 Brightwood Street, North York, ON M3H 2Z7  
 Neshama Hospice



**Hilditch Architect Inc.**

401 Richmond Street West, Suite 139  
 Toronto, Ontario M5V 3A8  
 t: (416) 977-7877 f: (416) 977-8460  
[www.hilditch-architect.com](http://www.hilditch-architect.com)



### SK-3.2

Interior View of Great Rm

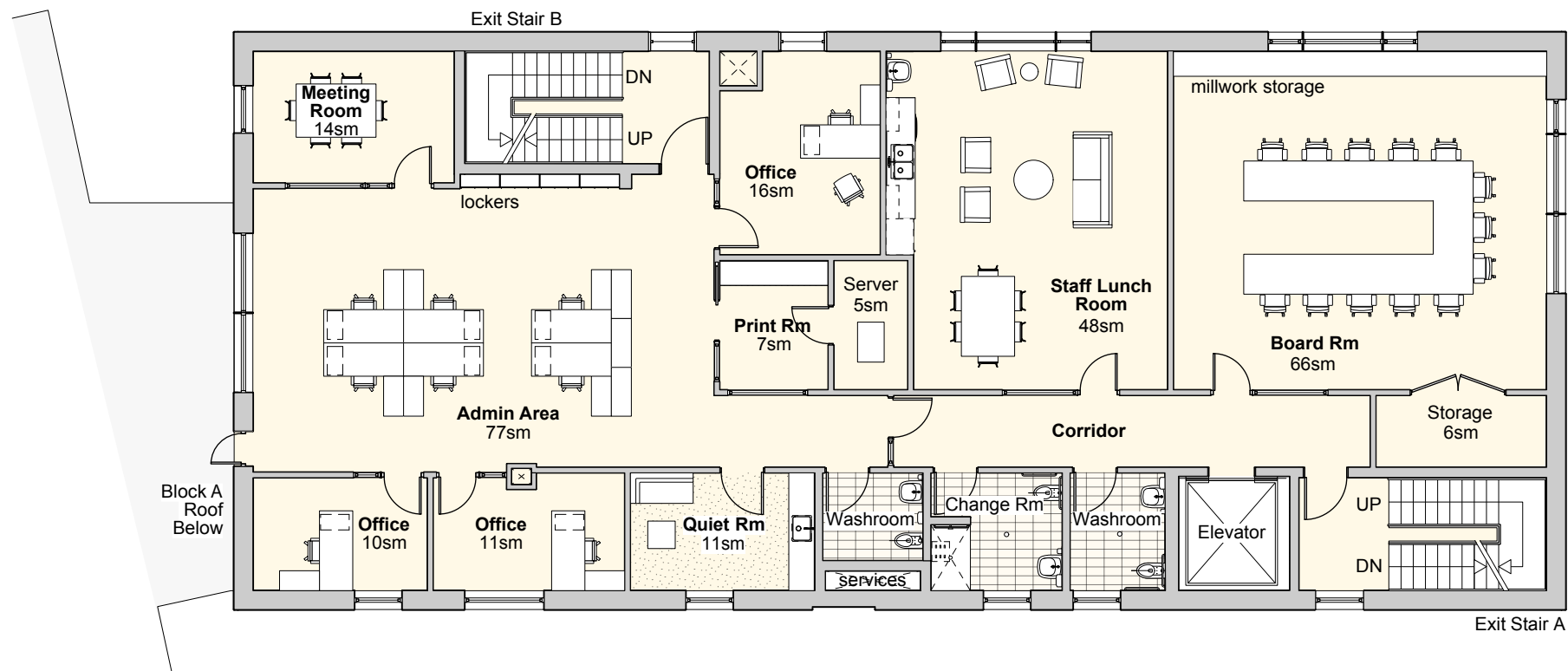
Date: January 14, 2021  
 Project No: 1809  
 Scale: 1:200

Concept sketch for:  
**Neshama Hospice**  
 25 Brightwood Street, North York, ON M3H 2Z7  
 Neshama Hospice



**Hilditch Architect Inc.** 

401 Richmond Street West, Suite 139  
 Toronto, Ontario M5V 3A8  
 t: (416) 977-7877 f: (416) 977-8460  
[www.hilditch-architect.com](http://www.hilditch-architect.com)



## SK-2.2 Second Floor Plan



Date: January 14, 2021  
Project No: 1809  
Scale: 1:150

Concept sketch for:  
**Neshama Hospice**

25 Brightwood Street, North York, ON M3H 2Z7

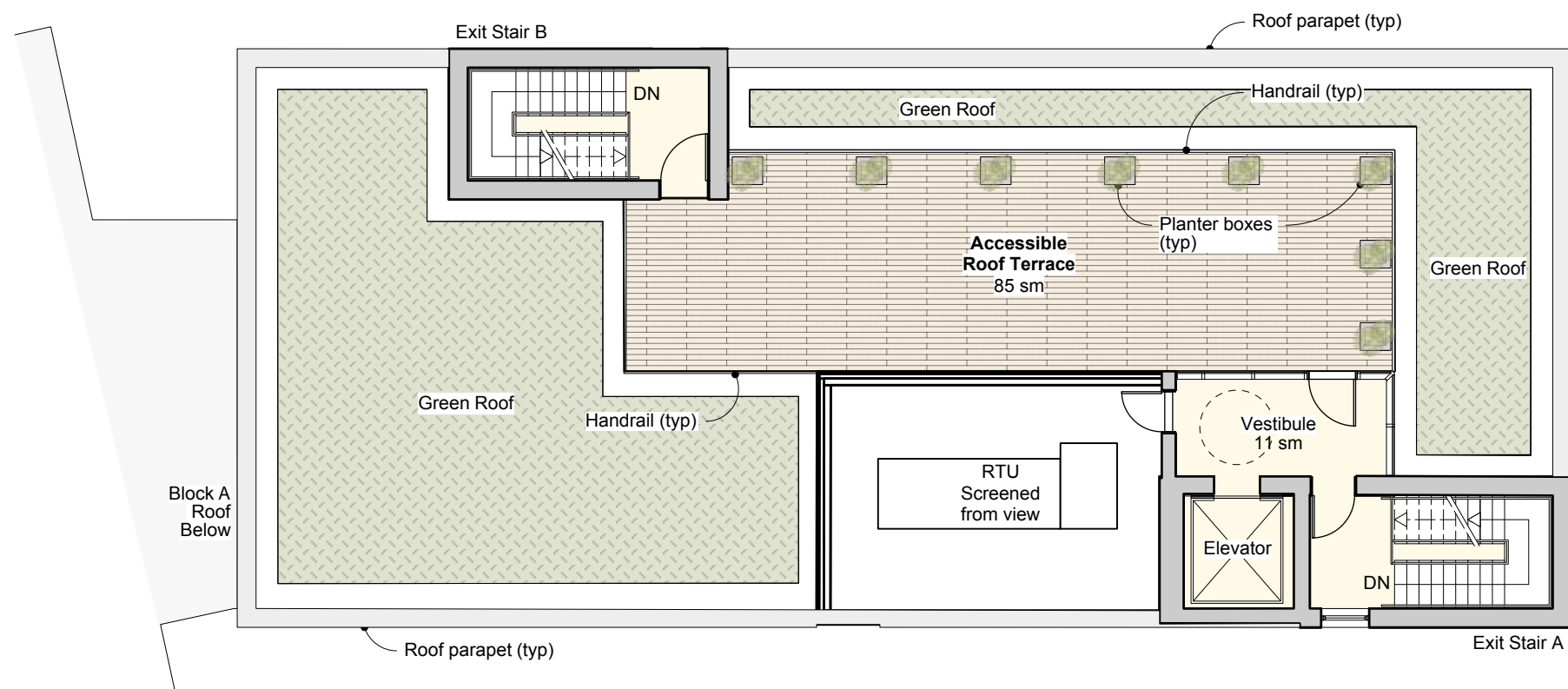
Neshama Hospice



**Hilditch Architect Inc.** 

401 Richmond Street West, Suite 139  
Toronto, Ontario M5V 3A8  
t: (416) 977-7877 f: (416) 977-8460  
[www.hilditch-architect.com](http://www.hilditch-architect.com)





### SK-2.3 Rooftop Garden Plan



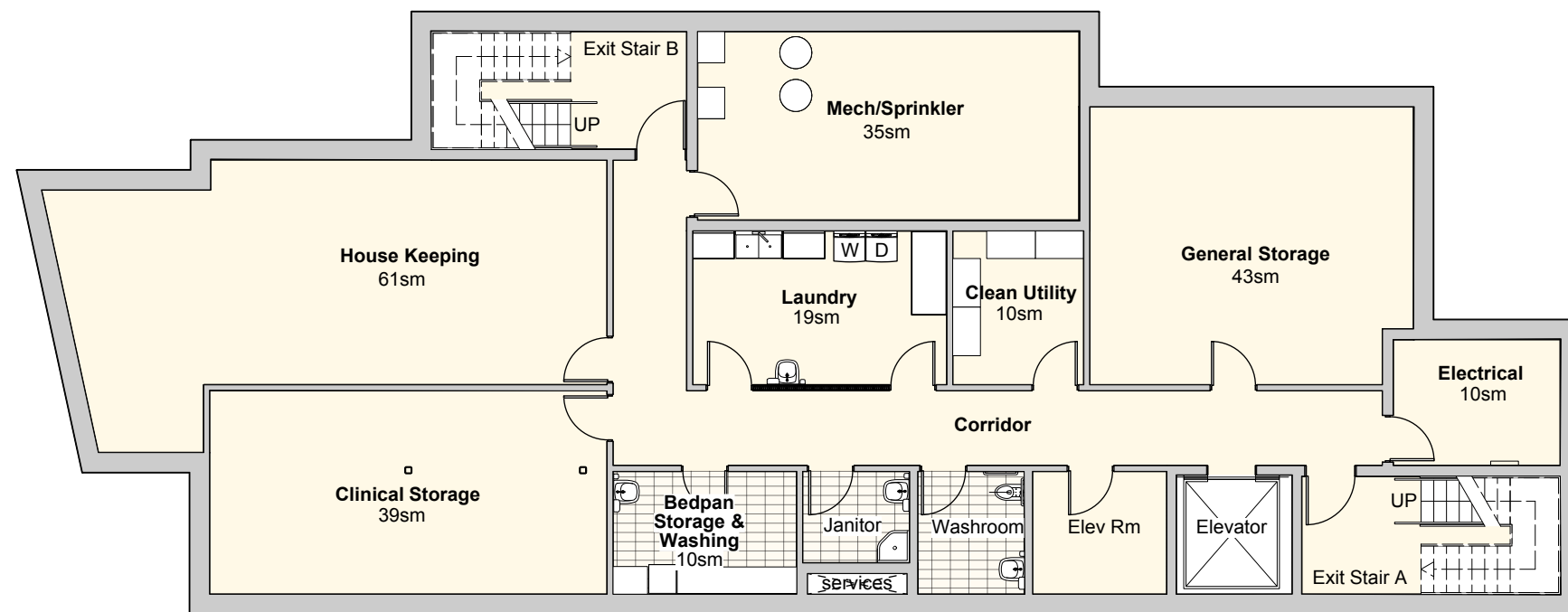
Date: January 14, 2021  
Project No: 1809  
Scale: 1:150

Concept sketch for:  
**Neshama Hospice**  
25 Brightwood Street, North York, ON M3H 2Z7  
Neshama Hospice



**Hilditch Architect Inc.** 

401 Richmond Street West, Suite 139  
Toronto, Ontario M5V 3A8  
t: (416) 977-7877 f: (416) 977-8460  
[www.hilditch-architect.com](http://www.hilditch-architect.com)



## SK-2.0 Basement Floor Plan



Date: January 14, 2021  
Project No: 1809  
Scale: 1:150

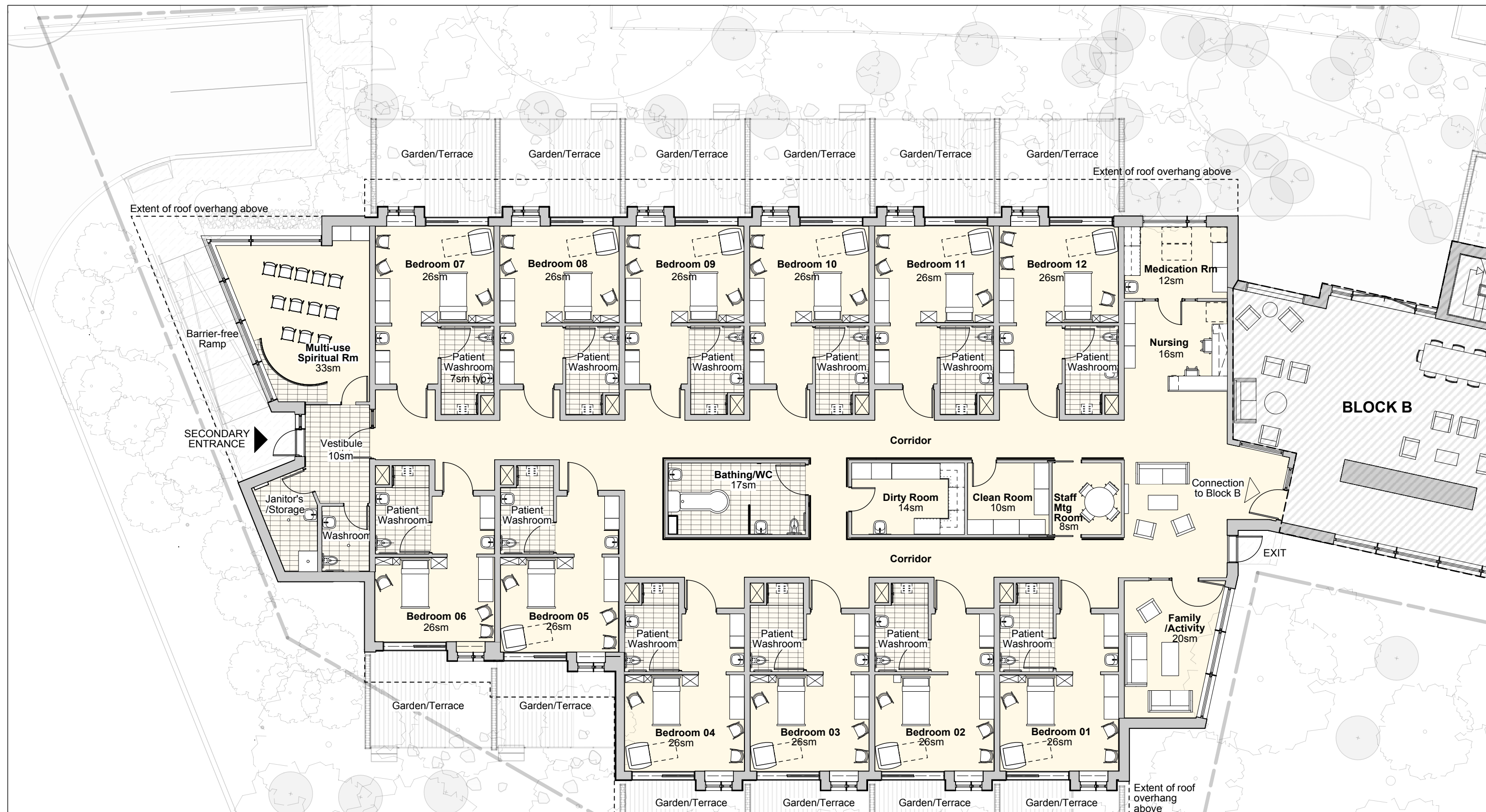
Concept sketch for:  
**Neshama Hospice**  
25 Brightwood Street, North York, ON M3H 2Z7  
Neshama Hospice



**Hilditch Architect Inc.** 

401 Richmond Street West, Suite 139  
Toronto, Ontario M5V 3A8  
t: (416) 977-7877 f: (416) 977-8460  
[www.hilditch-architect.com](http://www.hilditch-architect.com)





## SK-2.1A

### Ground Floor Plan (Block A)



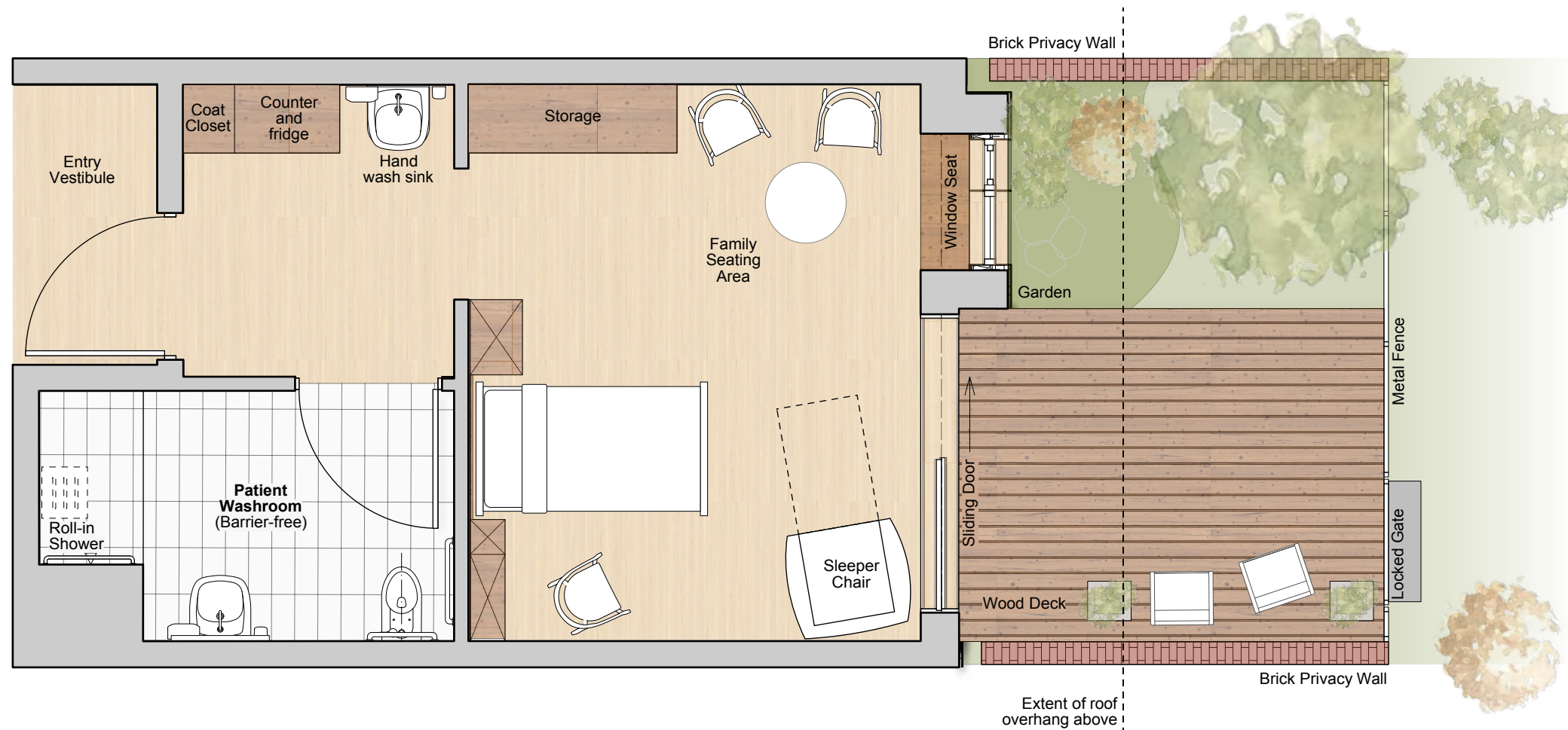
Date: January 14, 2021  
 Project No: 1809  
 Scale: 1:150

Concept sketch for:  
**Neshama Hospice**  
 25 Brightwood Street, North York, ON M3H 2Z7  
 Neshama Hospice



**Hilditch Architect Inc.**

401 Richmond Street West, Suite 139  
 Toronto, Ontario M5V 3A8  
 t: (416) 977-7877 f: (416) 977-8460  
[www.hilditch-architect.com](http://www.hilditch-architect.com)



## SK-2.4 Typical Bedroom Plan

Date: January 14, 2021  
Project No: 1809  
Scale: 1:200

Concept sketch for:

### Neshama Hospice

25 Brightwood Street, North York, ON M3H 2Z7

Neshama Hospice



**Hilditch Architect Inc.**

401 Richmond Street West, Suite 139  
Toronto, Ontario M5V 3A8  
t: (416) 977-7877 f: (416) 977-8460  
www.hilditch-architect.com





### SK-3.3

Interior View of Bedroom

Date: January 14, 2021  
 Project No: 1809  
 Scale: 1:200

Concept sketch for:  
**Neshama Hospice**  
 25 Brightwood Street, North York, ON M3H 2Z7  
 Neshama Hospice



**Hilditch Architect Inc.**

401 Richmond Street West, Suite 139  
 Toronto, Ontario M5V 3A8  
 t: (416) 977-7877 f: (416) 977-8460  
[www.hilditch-architect.com](http://www.hilditch-architect.com)





**SK-3.1**  
Secondary Entrance

Date: January 14, 2021  
Project No: 1809  
Scale: 1:200

Concept sketch for:  
**Neshama Hospice**  
25 Brightwood Street, North York, ON M3H 2Z7  
  
Neshama Hospice



**Hilditch Architect Inc.** 

401 Richmond Street West, Suite 139  
Toronto, Ontario M5V 3A8  
t: (416) 977-7877 f: (416) 977-8460  
[www.hilditch-architect.com](http://www.hilditch-architect.com)





THE GARDENS

Private gardens accessible from residence rooms



THE FOREST

Reforestation provides a calming and engaging environment



Communal and private spaces for social well-being

OUTDOOR GATHERING SPACE



ARCHITECTURAL MATERIALITY



Natural Materials, Wood, Clay Brick, Zinc



STREETSCAPE

Permeable paving and soft landscaping



THE GARDENS

Brick screens provide privacy and warmth



GREEN ROOF

Provides view of greenery from offices & roof top terrace



THE FOREST

Immersive, seasonal environment with bird habitats



## SK-1.2 Proposed Landscape Plan

Date: June 24, 2020  
Project No: 1809  
Scale: 1: 300

Concept sketch for:  
**Neshama Hospice**  
25 Brightwood Street, North York, ON M3H 2Z7  
Neshama Hospice



**Hilditch Architect Inc.**  
401 Richmond Street West, Suite 139  
Toronto, Ontario M5V 3A8  
t: (416) 977-7877 f: (416) 977-8460  
[www.hilditch-architect.com](http://www.hilditch-architect.com)